

# iVUE Carrier Access Billing



iVUE Carrier Access Billing is a powerful, flexible and scalable solution that allows you to automatically process and bill Interexchange Carriers or other telecommunication providers for traffic that uses your network. This solution can help you boost revenue by identifying and billing for other usages, increase efficiency by eliminating daily and manual processing and reduce printing and postage costs.

iVUE Carrier Access Billing (iVUE CABs) allows you to bill Interexchange Carriers or other telecommunication providers—such as Wireless Providers or Competitive Local Exchange Carriers (CLECs)—for traffic that uses your network, including calls that originate from and terminate at your end users. iVUE CABs allows you to rate the traffic at the appropriate tariff or contract rates and bill dedicated circuits to an End User or an Interexchange Carrier.

This powerful solution is designed to help you maximize revenues by being able to bill for usage that you may not have previously billed, spot missing usage earlier and correct errors as they occur. In addition, it increases efficiency by eliminating daily processing, which frees up your employees to focus on other tasks.

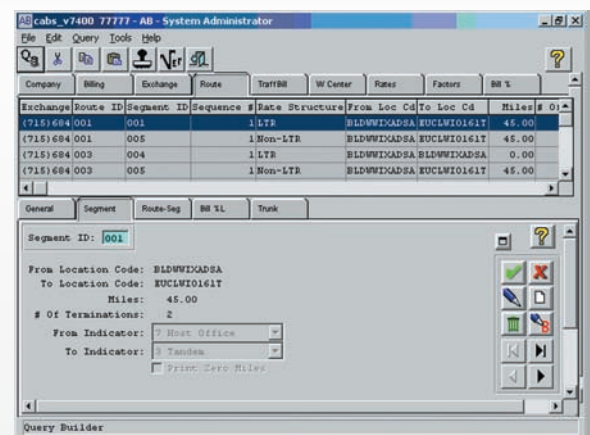
The close integration between iVUE CABs and iVUE General Ledger allows you to post entries from CABs directly to your General Ledger. iVUE CABs is also integrated with the iVUE End User Billing system, which allows for easy accumulation of Purchase of Accounts Receivable (PARs) and Billing and Collection (B&C).

Flexible and easy to use, iVUE CABs can accept a wide variety of data inputs and can process call records from a variety of switch manufactures, including Nortel, Siemens, Lucent, Ericsson, Metaswitch, Coppercom, Tekelec, Redcomm and others. It can also accept EMI (Exchange Message Interface) records that a tandem provider or third-party mediation system may produce.

## Product Benefits

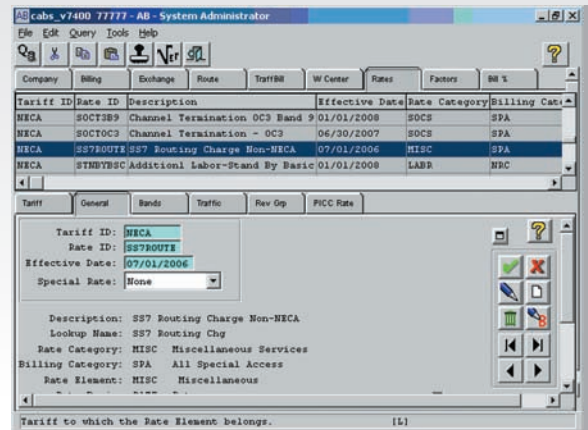
iVUE CABs provides a wealth of benefits, including:

- **Improved usage of resources.** All usage can be processed via unattended processes and in near real-time, which allows users to focus their attention on exceptions—and not spend time running individual data files through the required processes. Users should also be able to spot discrepancies in the usage volumes sooner, which may signal network problems that need to be address to ensure proper accumulation of call detail records.



iVUE Carrier Access Billing allows you to easily establish and maintain segment details, including mileage, for each route. Using the Route > Segment tab, you can quickly see all route/segment records present in Access Billing.

- **Efficient call-record processing.** iVUE CABs provides automated processing of files that contain call detail records in Automated Messaging Accounting (AMA), Exchange Message Interface (EMI) or Call Detail Record (CDR) formats. The files that contain the call records will be processed through the iVUE CABs and iVUE End User Billing system as soon as the file is fully received on the iVUE server. This allows you to process call records early in the morning, late at night or on weekends when other employees would not normally be using the server. This allows for the server's resources to be dedicated to other tasks during normal work hours.
- **Increased billing accuracy.** iVUE CABs is designed to route traffic based on how it travels in the network. The user can build routes to direct traffic over a certain network path based on items such as trunk number, carrier and traffic type, which increases accuracy of billings.
- **iVUE CABs also offers Interexchange Carrier-based (IXC) and Operating Company Numbers-based (OCN) billing features.** Interexchange Carriers are billed for traditional long distance types of calls. OCNs are used in the billing of Reciprocal Compensation and also in the billing of Wireless Service Providers. iVUE CABs also offers the capability for one company to bill on behalf of other Local Transport providers, with separate display pages per provider.
- **Decreased printing and postage costs.** Producing and distributing CABs invoices via mechanized means can be an effective way to increase revenue by decreasing days sales outstanding. One company, after implementing iVUE CABs, was able to reduce its days sales outstanding from more than 60 days to just 28 days. In addition, producing and distributing CABs invoices via mechanized means can reduce printing and postage costs. In NISC's data center, monthly printing consumables were reduced by more than 75% after going to all-mechanized distribution. Postage costs were reduced by more than 80%.
- **Reduced manual processing.** iVUE CABs integration with iVUE General Ledger allows for real-time posting of CABs revenues and receivables. Posting of payments in CABs will also post to the iVUE General Ledger. This eliminates the need to double-enter payments or manually post CABs entries in the General Ledger.
- **Powerful information for solid decision making.** Standard reporting available with the iVUE CABs software is far superior to virtually any other system today. Reports allow users to retrieve data at a general, high level or at a very precise, specific level. In addition, a wealth of different reporting formats provide users with the data they want in the specific format they want.
- **Increased revenue opportunities.** The iVUE CABs software will determine the jurisdiction of a call based on the originating and terminating location of the call. When the jurisdiction of the call cannot be determined, then factors will be applied to the usage. When factors have to be applied, iVUE CABs offers the ability for a company to calculate the Percent Interstate Usage (PIU) factor, based on its own usage. This allows a company to develop factors based



With iVUE Carrier Access Billing, you can easily see all rate records present in Access Billing. You can also use the AB > System Administrator > Rates > General tab to assign a Rate Identification Code for each Tariff ID, Rate Element.

on its actual usage volumes rather than accept a statewide average PIU from the Interexchange Carrier. The determination of jurisdiction based on actual location and the application of calculated PIUs will give a company more control over what is billed at interstate vs. intrastate rates. This may ultimately result in increased revenues due to rate differences between the interstate and intrastate rates.

- **Provide high-quality customer service.** A wide variety of reports are available to show a user on a bill cycle basis where all of the call records are in the process and if the records will or will not bill. A customer can quickly produce each and every call detail record that was included on a Carrier's bill to aid in the collection of outstanding balances or to prove to the customer that the billing is correct and accurate.

## Product Features

Features of iVUE Carrier Access Billing include:

- Near real-time usage processing
- Easy-to-use graphical user interface that allows user to simply point and click
- Navigation screens with logical groupings that guide the user in the navigation process
- Ability to distribute payment to aged invoices
- Call effective-date rating
- SECAB-compliant billing
- Multiple trending reports for usage analysis
- User-definable data-retention periods
- Ability to use tariff or contracted rates
- Ability to tie multiple Carrier Identification Codes (CIC) to a single CIC to produce Access Carrier Name Abbreviation (ACNA)-based bill
- Ability to hold usage until contract is in place. At that point, this older usage can be brought through to a bill
- Date-sensitive cycles that allow older usage to bill in arrears but new usage is held for the next cycle
- Software can create NECA AS1000 or EC1050 form needed on a monthly basis for NECA members
- Variety of invoice options, including traditional paper invoices and PDF images of the paper invoice
- Allows for creation of mechanized Small Exchange Carrier Access Billing (SECAB) invoices

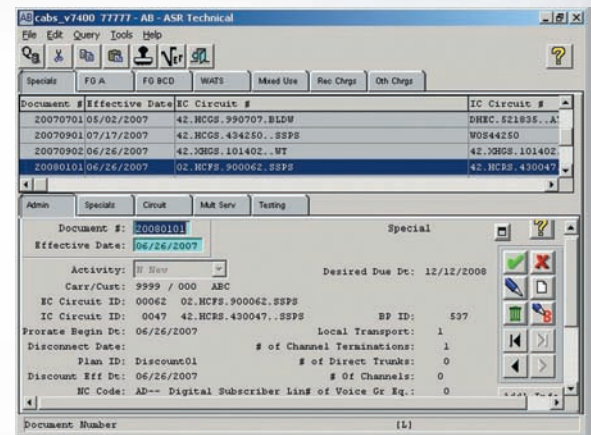
### Additional Information

Find out more about iVUE Carrier Access Billing:

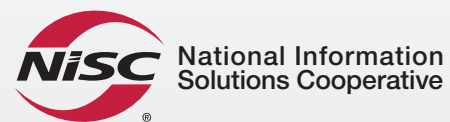
CALL 1.866.999.6472

VISIT [www.nisc.coop](http://www.nisc.coop)

E-MAIL [kevin.anderson@nisc.coop](mailto:kevin.anderson@nisc.coop)



iVUE Carrier Access Billing allows you to easily set up and monitor special access using the Access Billing > ASR Technical > Specials > Administrator tab.



Mandan, North Dakota | Lake St. Louis, Missouri  
1.866.WWW.NISC (1.866.999.6472)